

Polk City Commercial
Development Land
1090 Parker Blvd
Polk City, Iowa



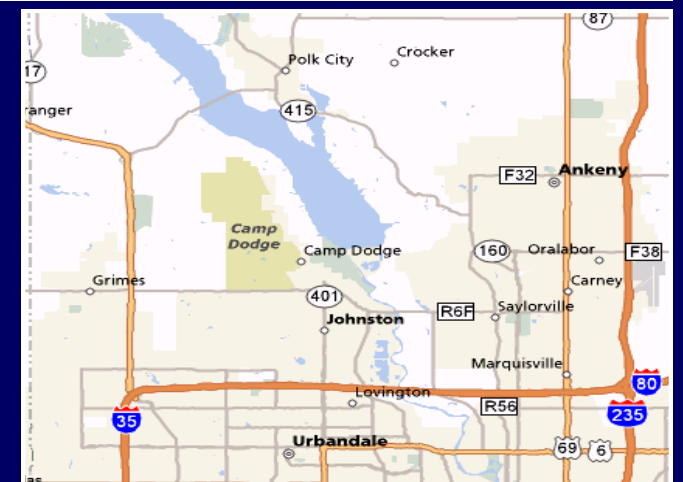
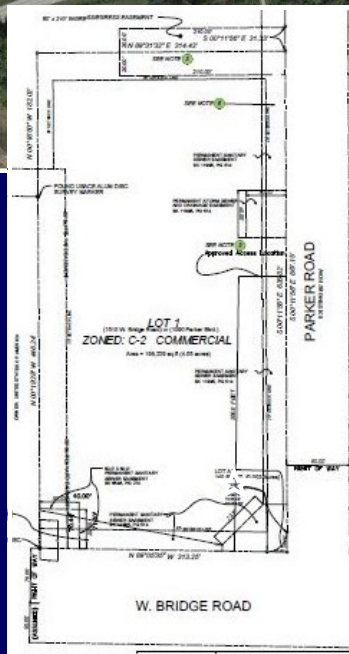
FOR SALE

Polk City prime Commercial corner. Located at the “front door” to Polk City, Iowa.

Parker Blvd is the first “main” North/South road when entering from West.

- 4.55 Acres Commercial
- Corner location
- All Utilities
- Build-to-Suit Possible

Price: 1,139,638 (\$5.75/SF)



For more information please contact:

Douglas A. Siedenburgh
(515) 223-6222 office
(515) 778-6222 mobile
dougs@siedenburgh.com
www.siedenburgh.com

