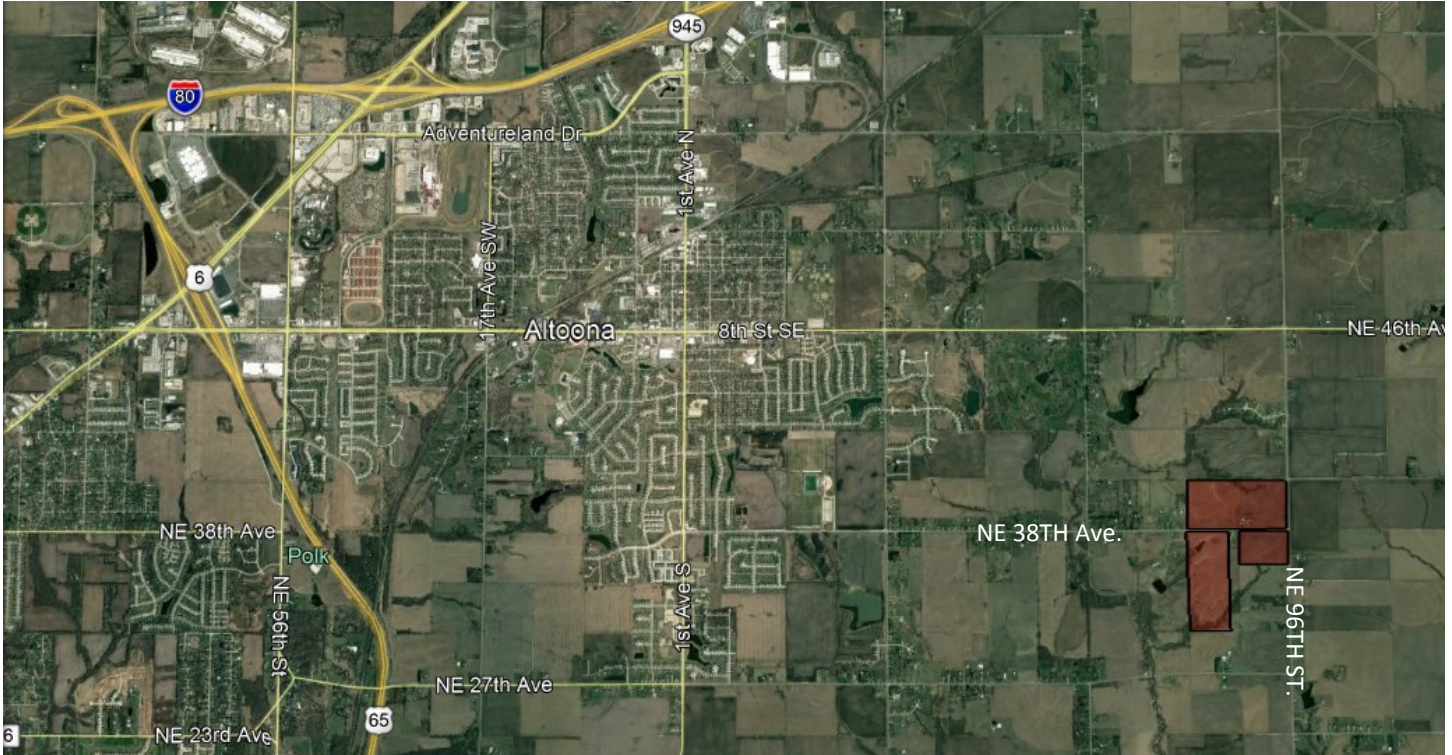


ALTOONA DEVELOPMENT LAND

9450 NE 38th Avenue
Altoona, IA 50009

FOR SALE



DEVELOPMENT LAND

Approximately 178 A. of Development ground on the East side of Altoona in Polk County.

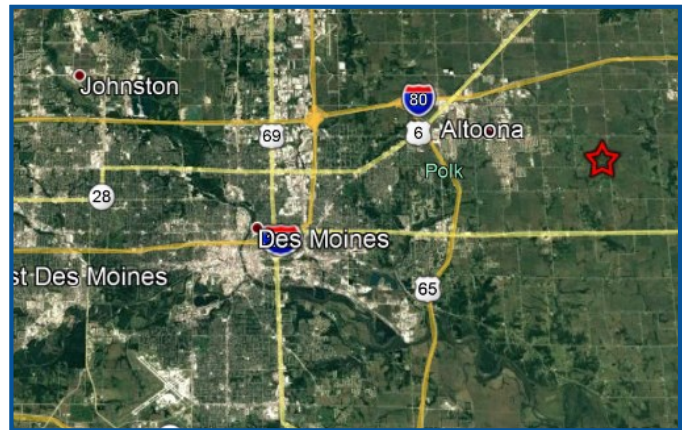
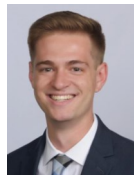
- 178.33 Acres, may divide
- Electric & Gas in place
- Rural Water to the Site
- Sewer Nearby to the SW in Mud Creek
- 1,648 SF House
- 4 Outbuildings Totaling 6,640 SF
- Crop Land CSR2 = 77.90

Price: \$17,700/Acre (\$3,151,775)



CONTACT

Ryan D. Siedenburger
(515) 339-9616 Mobile
(515) 223-6222 Office
ryan@siedenburger.com

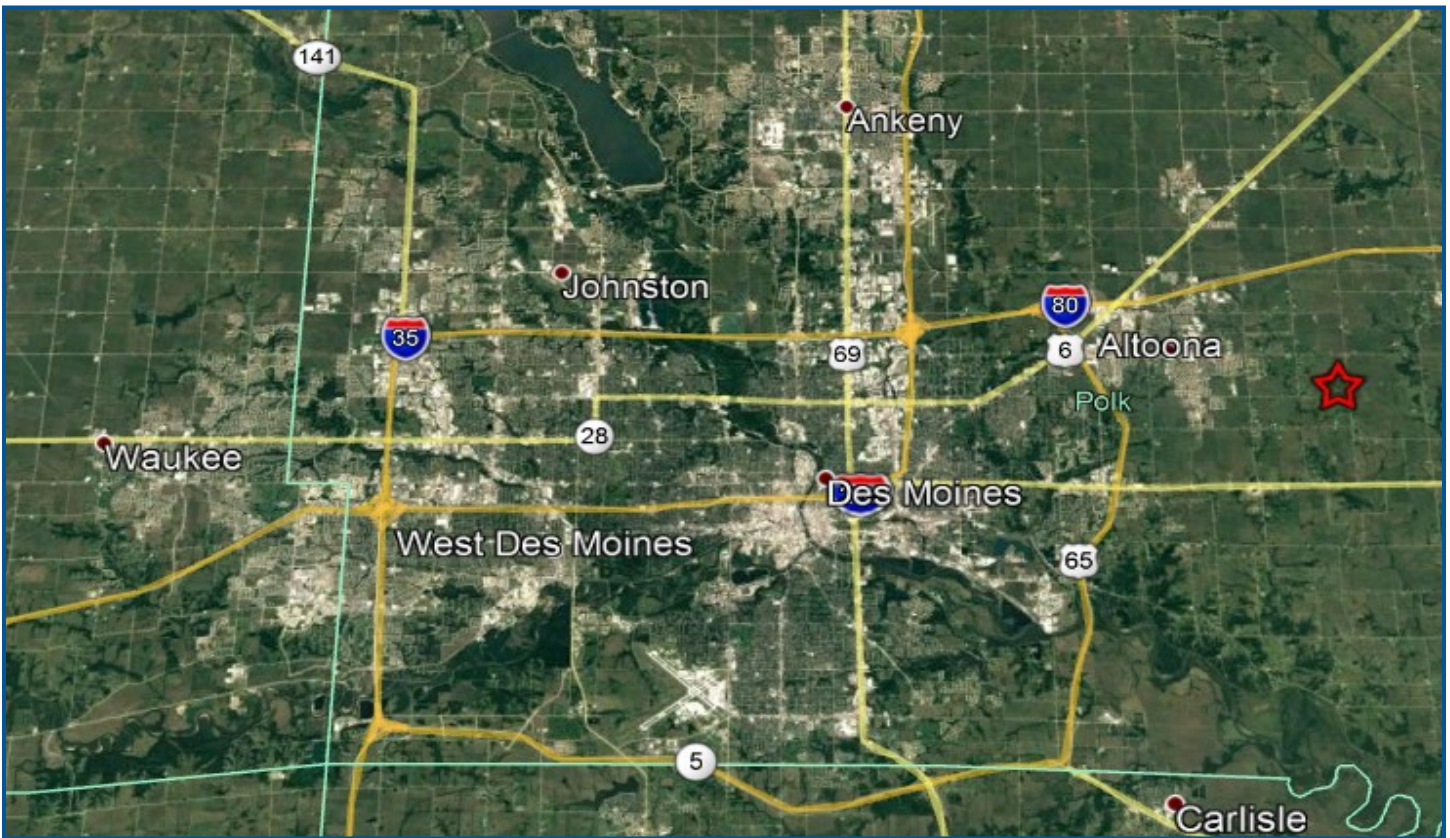
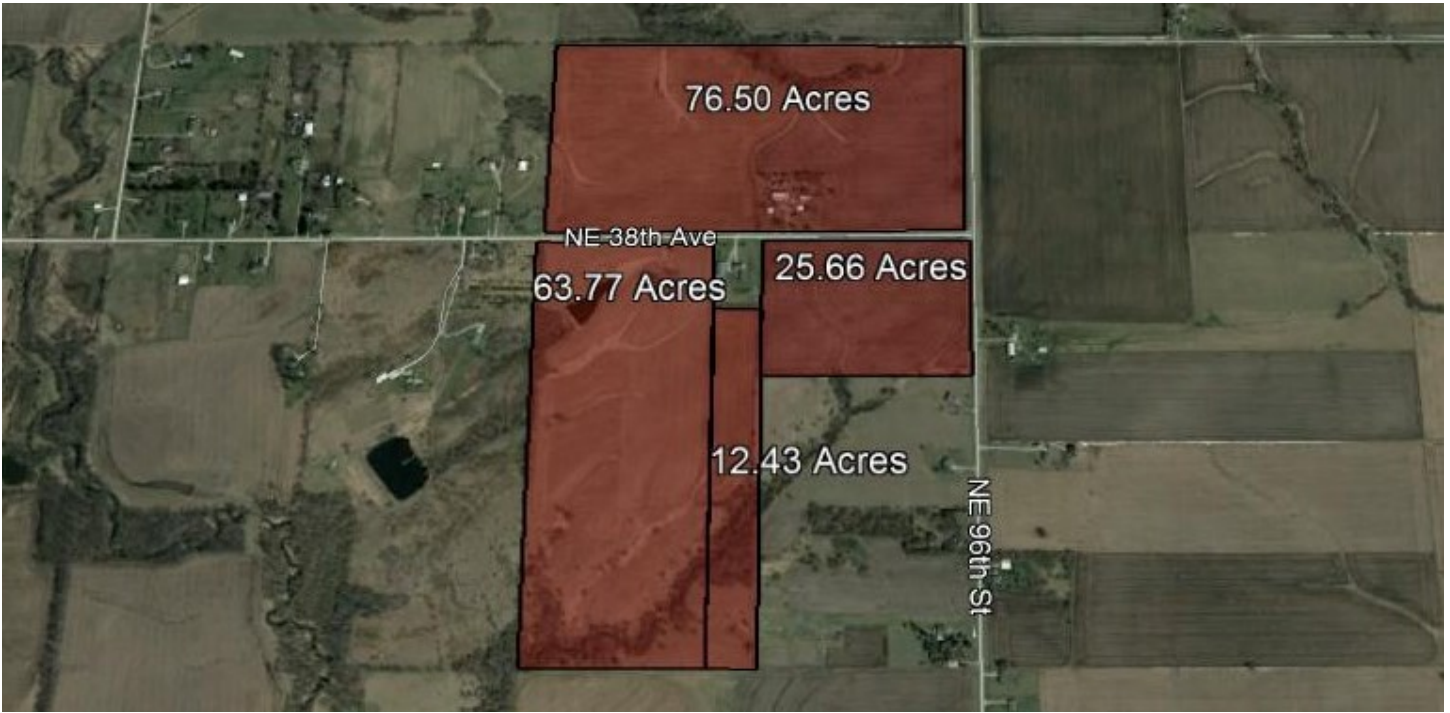


2020 V.1

ALTOONA DEVELOPMENT LAND

9450 NE 38th Avenue
Altoona, IA 50009

FOR SALE



2020 V.1