

**WALL LEGEND**

| ON PLAN | DETAIL | TAG | DESCRIPTION  |
|---------|--------|-----|--|
|         |        | A1  | 5/8" TYPE 'X' GYPSUM BOARD<br>3-5/8" METAL STUDS WITH BATT INSULATION<br>5/8" TYPE 'X' GYPSUM BOARD  |
|         |        | A2  | 5/8" TYPE 'X' GYPSUM BOARD<br>6" METAL STUDS WITH BATT INSULATION<br>5/8" TYPE 'X' GYPSUM BOARD  |
|         |        | A3  | 5/8" TYPE 'X' GYPSUM BOARD<br>8" METAL STUDS WITH BATT INSULATION<br>5/8" TYPE 'X' GYPSUM BOARD  |
|         |        | B   | (2) LAYERS OF 5/8" TYPE 'X' GYPSUM BOARD<br>3-5/8" METAL STUDS WITH BATT INSULATION<br>(2) LAYERS OF 5/8" TYPE 'X' GYPSUM BOARD  |
|         |        | B1  | 7-5/8" CONCRETE MASONRY UNITS, RUNNING BOND<br>BULL NOSE AT ALL OUTSIDE CORNERS  |
|         |        | B2  | 3-5/8" CONCRETE MASONRY UNITS, RUNNING BOND<br>BULL NOSE AT ALL OUTSIDE CORNERS  |
|         |        | C   | 3 5/8" BRICK VENEER<br>1 1/2" AIR GAP<br>ON MTI CAVITY DRAINAGE BOARD<br>(FULL HEIGHT AND LENGTH OF MASONRY)<br>2" RIGID INSULATION, TAPE JOINTS<br>WEATHER RESISTANT BARRIER<br>5/8" EXTERIOR GYPSUM SHEATHING<br>6" METAL STUDS WITH BATT INSULATION<br>6 MIL POLY VAPOR BARRIER<br>5/8" TYPE 'X' GYPSUM BOARD |

**GENERAL NOTES:**

- GN1: ALL INTERIOR PARTITIONS MUST EXTEND TO UNDERSIDE OF ROOF DECK UNLESS OTHERWISE NOTED.
- GN2: ALL INTERIOR STUD WALLS TO HAVE SOUND BATT INSULATION FULL HEIGHT AND FULL DEPTH OF STUD CAVITY FROM FLOOR TO ROOF DECK. SECURE INSULATION TO STUD TO PREVENT SAG.
- GN3: ALL STUD WALLS TO HAVE TYPE 'X' GYP BD. FROM FLOOR TO ROOF DECK BOTH SIDES OF STUD WALL, SEAL WALL AT ROOF DECK WITH SEALANT OR WITH BATT INSULATION.
- GN4: ALL EXTERIOR WALLS TO HAVE GYPSUM BOARD ON 6MIL POLY VAPOR BARRIER - TYPICAL

**SYMBOL LEGEND**

| ON PLAN | DESCRIPTION  |
|---------|--|
| FEC     | FIRE EXTINGUISHER IN CABINET, SEMI RECESSED UNO. SEE SPEC                                |
| FE      | FIRE EXTINGUISHER ON HOOK, SEE SPEC  |
| FD      | FLOOR DRAIN, SEE PLUMBING  |
| CG      | CORNER GUARD AT OUTSIDE CORNER, SEE SPEC   |
| CG      | END WALL GUARD, VERIFY WALL THICKNESS, SEE SPEC  |
| CJ      | CONTROL JOINT: WHERE SHOWN AND 20'-0" O.C. AT MASONRY, 30'-0" O.C. AT GYPSUM BOARD WALLS |
|         | BULL NOSE CMU: WHERE SHOWN AND AT ALL OUTSIDE CORNERS.                                   |
|         | SEMI-RECESSED CABINET UNIT HEATER (CUH), SEE ELECTRICAL                                  |

**KEYNOTES**

| TAG | COMMENTS |
|-----|----------|
|     |          |



119 Second Street, PO Box 169 Polk City, IA 50226  
Office: 515.984.3077 Website: www.ethos.archi

CIVIL ENGINEER

ARCHITECT AND INTERIOR DESIGNER  
**ETHOS DESIGN GROUP, INC.**  
119 SECOND STREET, PO BOX 169  
POLK CITY, IA 50226  
Tel. 515.984.3077

STRUCTURAL ENGINEER

MEP ENGINEER



PROJECT NAME:

**CROSSROADS 141**

141 / CROSSROADS CORRIDOR  
GRIMES, IA

OWNER

**BRIAN BALMER / JOHN NIELAND**

DRAWING ISSUE INFORMATION:

ISSUE FOR : DD PROGRESS - APRIL  
ISSUE DATE : 13, 2021

MARK DATE DESCRIPTION

MANAGEMENT INFORMATION:

PROJECT 2020.155  
PRINCIPAL IN CHARGE : TIM OLSON PROJECT ARCHITECT : JS  
DRAWN CC CHECKED JS  
BY: BY:

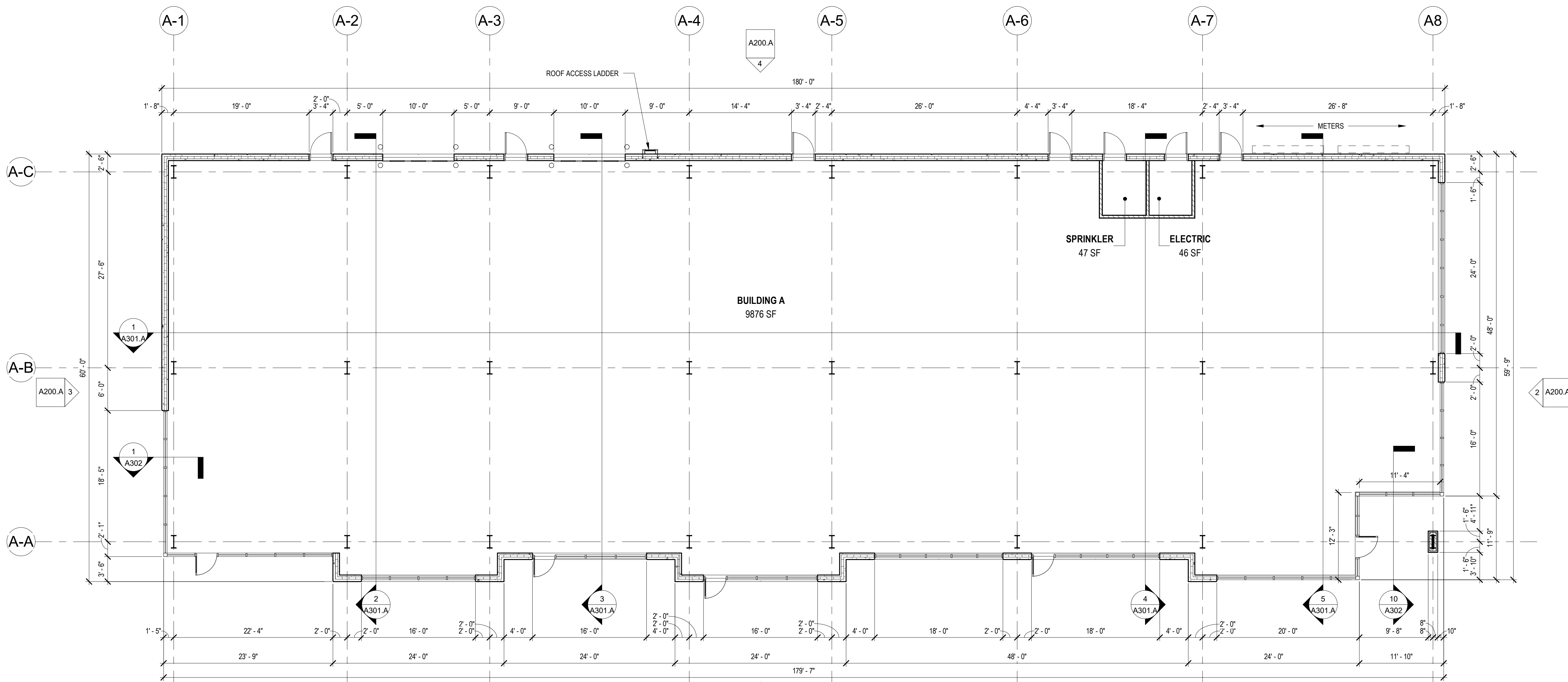
© 2021 ETHOS DESIGN GROUP, INC.  
THESE DOCUMENTS HAVE BEEN PREPARED SPECIFICALLY FOR THE PROJECT REFERENCED ABOVE. THEY ARE NOT TO BE USED FOR OTHER PROJECTS OR IN LOCATIONS OTHER THAN SPECIFIED WITHOUT THE WRITTEN APPROVAL AND PARTICIPATION OF ETHOS DESIGN GROUP, INC.

SHEET TITLE:

**FLOOR PLAN - LEVEL ONE - BUILDING A**

SHEET NO.

**A101.A**



**LEVEL ONE FLOOR PLAN - BUILDING A**  
1/8" = 1'-0"

**PRELIMINARY NOT FOR CONSTRUCTION**