

**P**olk City Commercial  
Development Land  
1090 Parker Blvd  
Polk City, Iowa

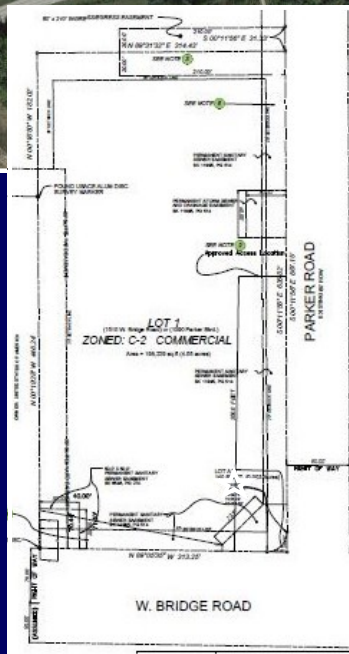


Polk City prime Commercial corner. Located at the “front door” to Polk City, Iowa.

Parker Blvd is the first “main” North/South road when entering from West.

- 4.55 Acres Commercial
- Corner location
- All Utilities
- Build-to-Suit Possible

Price: 1,139,638 (\$5.75/SF)



For more information please contact:

Douglas A. Siedenburgh  
(515) 223-6222 office  
(515) 778-6222 mobile  
dougs@siedenburgh.com  
www.siedenburgh.com

