

# URBANDALE OFFICE SPACE

2350 128th Street,  
Urbandale, IA 50322

**FOR LEASE OR SALE**



## HIGH VISIBILITY OFFICE SPACE

Highly visible office space located on the hard corner of Hickman Road & 128th Street in Urbandale, Iowa. The available 5,260 sf can be demised. The location offers easy access to I-80/30 and superb signage visibility.

- 5,260 SF For Lease — Can Demise
- 14 private offices, open cube space, training room w/ kitchenette, & M/W Restrooms
- Excellent visibility on Hickman Road with monument signage available

**Base Rent:** \$10.50/SF NNN

**Operating Exp:** \$7.00/SF

**Sale Price:** Negotiable

[View Our Virtual Tour](#)



## CONTACT

**Ryan D. Siedenbug**  
(515) 339-9616 Mobile  
(515) 223-6222 Office  
ryan@siedenbug.com

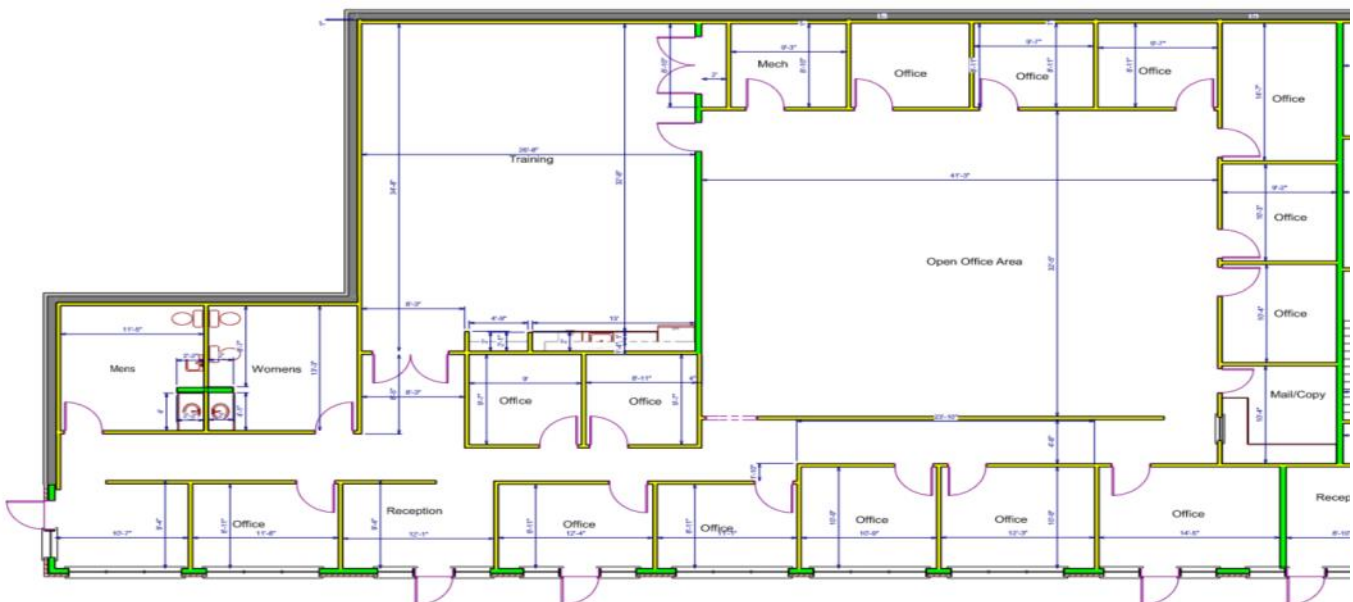


2020 V.1

# URBANDALE OFFICE BUILDING

2350 128th Street,  
Urbandale, IA 50322

**FOR LEASE OR SALE**



**The Siedenburg Group**  
1350 NW 138th Street, Suite 450  
Clive, Iowa 50325  
[www.siedenburg.com](http://www.siedenburg.com)



We obtained the information herein from sources we believe to be reliable but is not warranted as to accuracy and may change or be updated without notice.