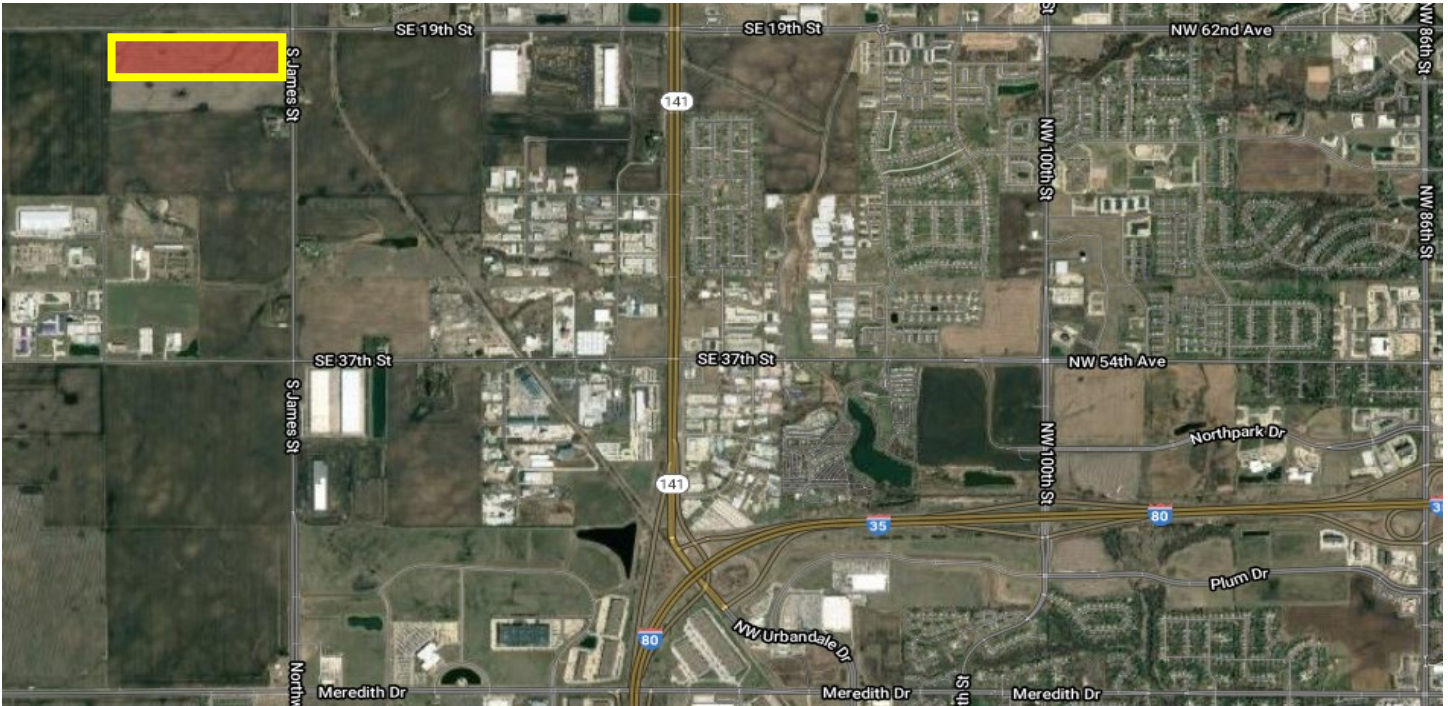


GRIMES COMMERCIAL/RESIDENTIAL LAND

S James Street & SW 19th Street
Grimes, Iowa 50111

AVAILABLE



COMMERCIAL/RESIDENTIAL LAND

Key Corner in path of Growth Arterial Intersection in Grimes, Iowa

37.52 Acres - PUD

- 12.5 Acres +/- High Density Residential
- 12.5 Acres +/- Med. Density Resi/Sr Care
- 12.5 Acres +/- Commercial
- Sewer in Summer 2022
- Zoned PUD
- Up to 403 Residential Units

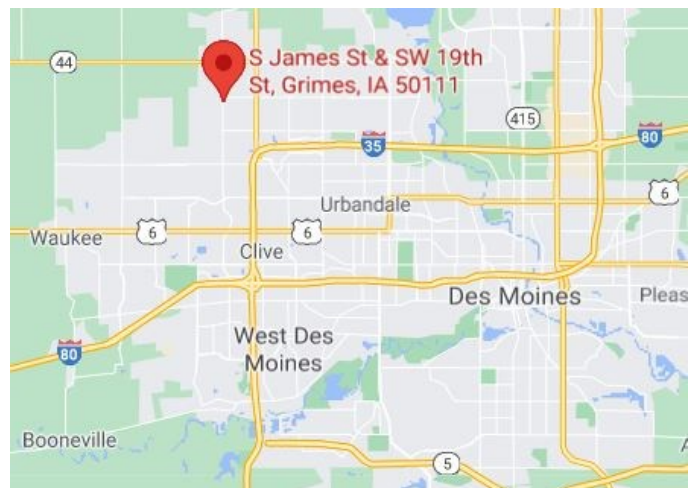
DEMOS	1 Mile	3 Mile	5 Mile
Population	3,489	33,430	89,537
Av. HH Income	\$82,993	\$126,081	\$125,971
Median Age	33.1	35.9	37.9

CONTACT

Daniel C. Siedenburgh
(515) 778-5566 Mobile
(515) 223-6222 Office
daniel@siedenburgh.com



Ryan D. Siedenburgh
(515) 339-9616 Mobile
(515) 223-6222 Office
ryan@siedenburgh.com



2021 V1

GRIMES COMMERCIAL/RESIDENTIAL LAND

S James Street & SW 19th Street
Grimes, Iowa 50111

AVAILABLE

CONCEPT PLAN:

